



For a healthy  
start in life

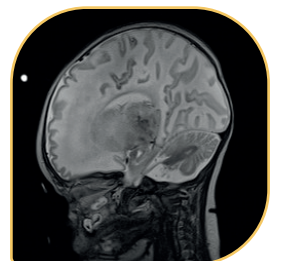


## 16-CHANNEL HEAD ARRAY COIL 1.5 / 3.0T

- 16-channel Array, cylindrical, receive only coil
- High-resolution MR brain scans of new and premature born babies up to approx. 3 months with head circumference of approx. 42cm
- Perfect for scanning intubated patients
- Improved SNR and image homogeneity: 35% increased SNR compared to 8-channel Array coil (e.g. Siemens Skyra)
- Extended field of view for head and throat scans: 17% enhanced field of view compared to 8-channel Array coil
- Approved for use inside MR Diagnostics Incubator System **nomag**<sup>®</sup> IC **ADVANCED**

Compatible with leading MRI devices like Siemens, Philips, GE  
Further details upon request

Change of technical specification without notice



Kindly provided:  
University Hospital Tübingen, Germany

